

Frimley Health and Care



Online Community Panel



Confidence in managing your long-term condition survey results

Survey duration: 13 September – 11 October

Total responses received: 87



What would you like to hear about from your local Integrated Care System Survey

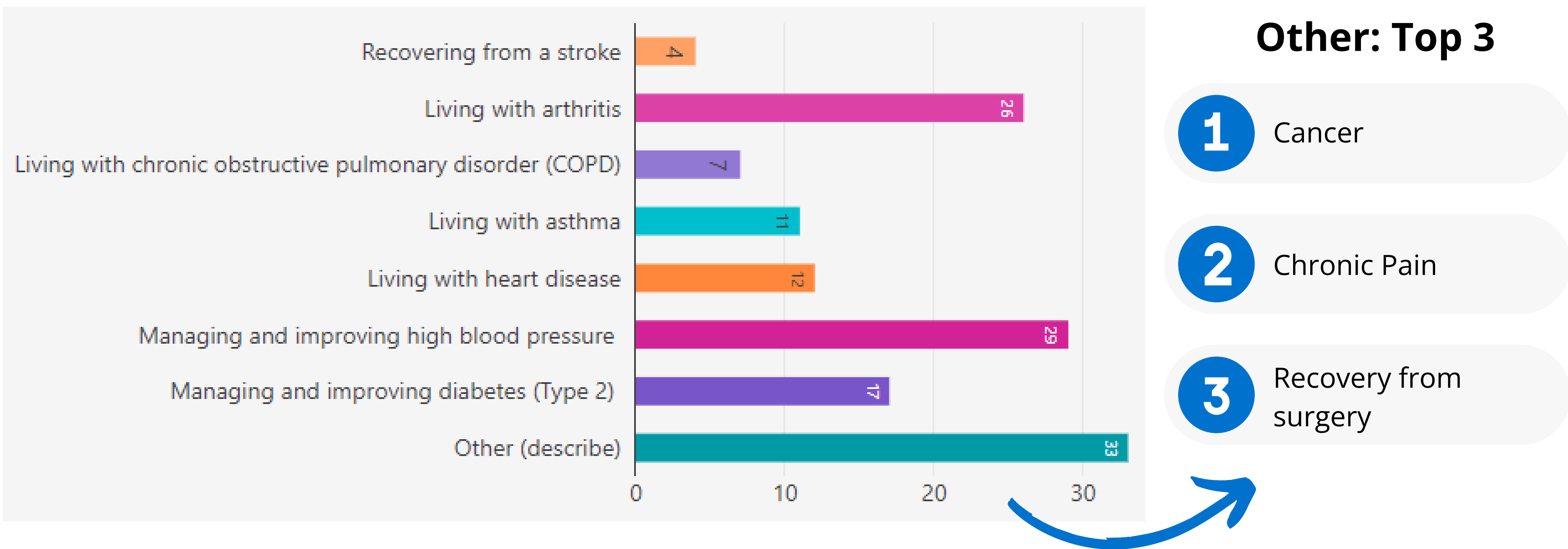
In our last survey, many of you highlighted that you would like to have better access to information on understanding and managing long term conditions.

In order for us to provide you with this information, we needed to better understand what information you already have, what are the gaps, what information you would find helpful and how you would like us to communicate it to you. Your answers to this survey will provide us with this insight.

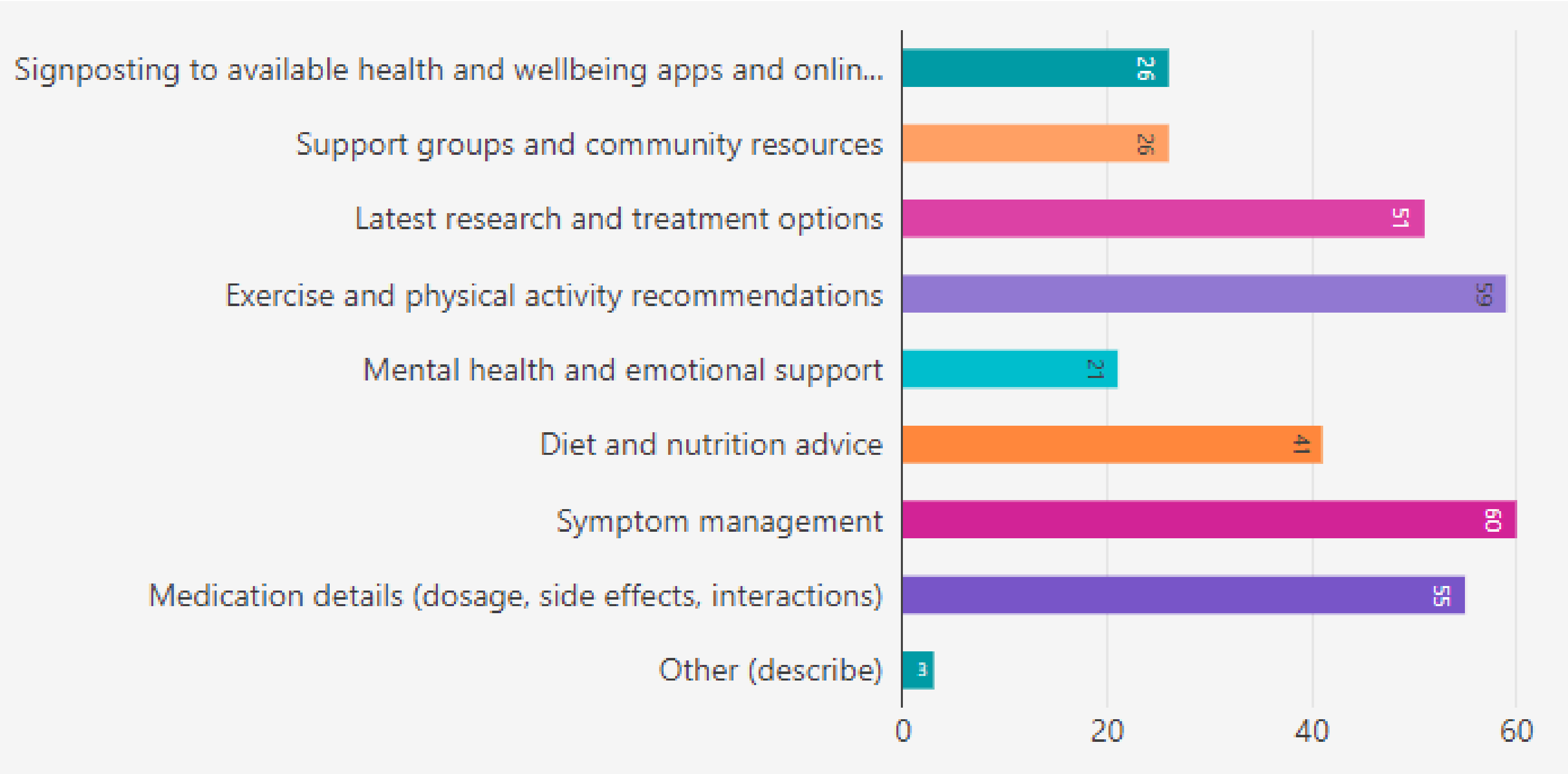
The results will be shared with the communications and engagement team to help impact future communications as well as the relevant long term condition clinical teams.



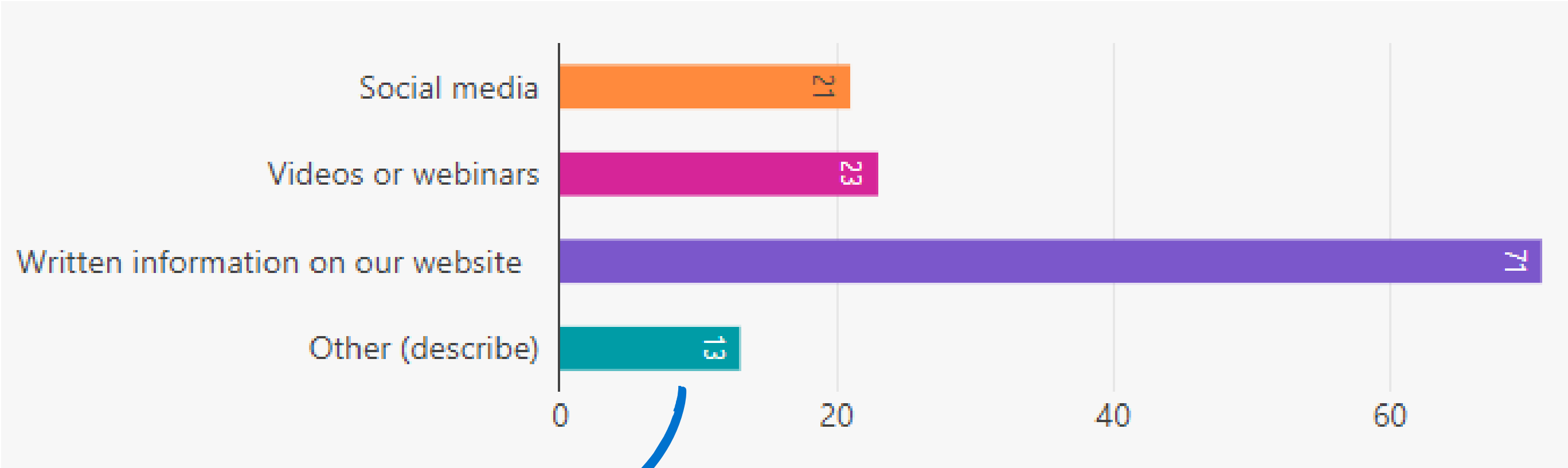
What health conditions would it be most useful to have information about?



When managing your health condition, which of the following types of information do you find most essential?



How would you like us to communicate information about health conditions?



Other:

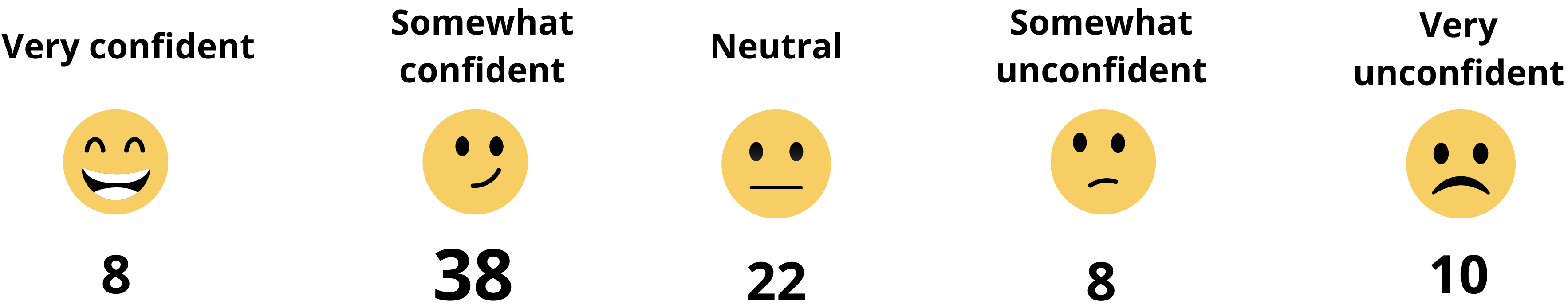


Information/newsletter
via email

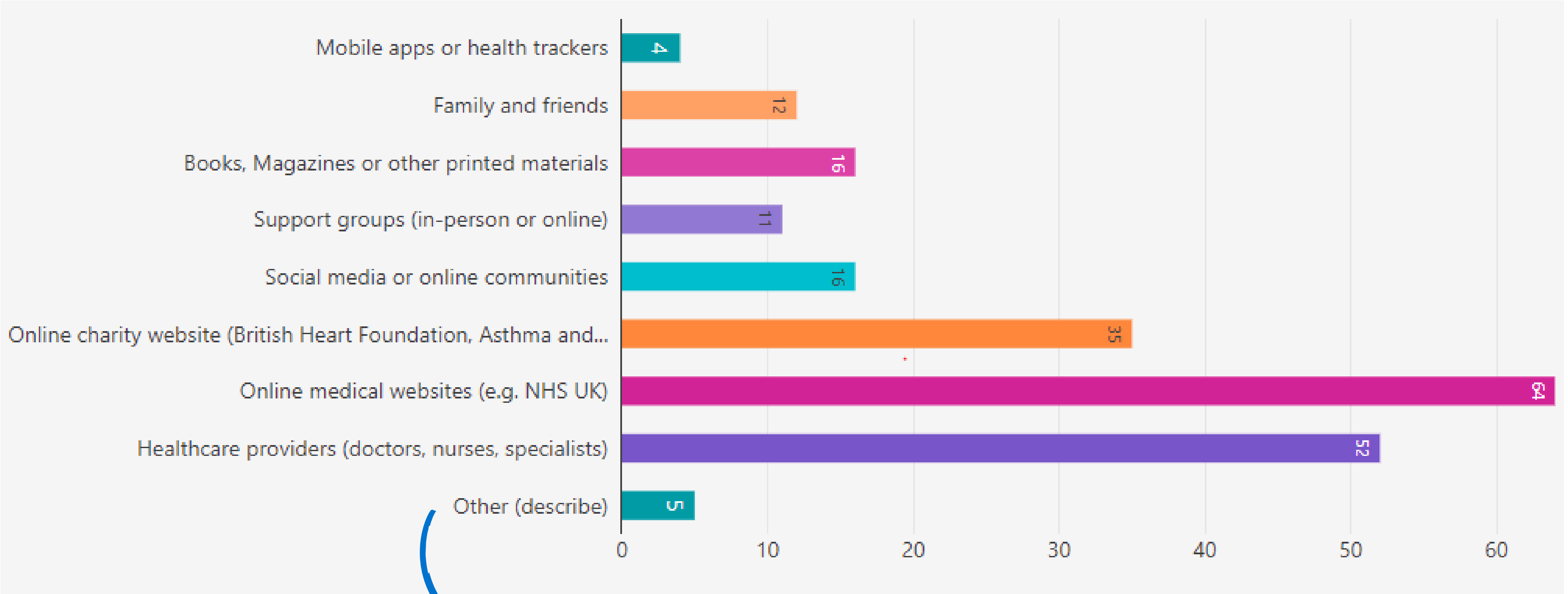
How frequently do you seek new information about your condition?



How confident are you in finding reliable and accurate information about your health condition?



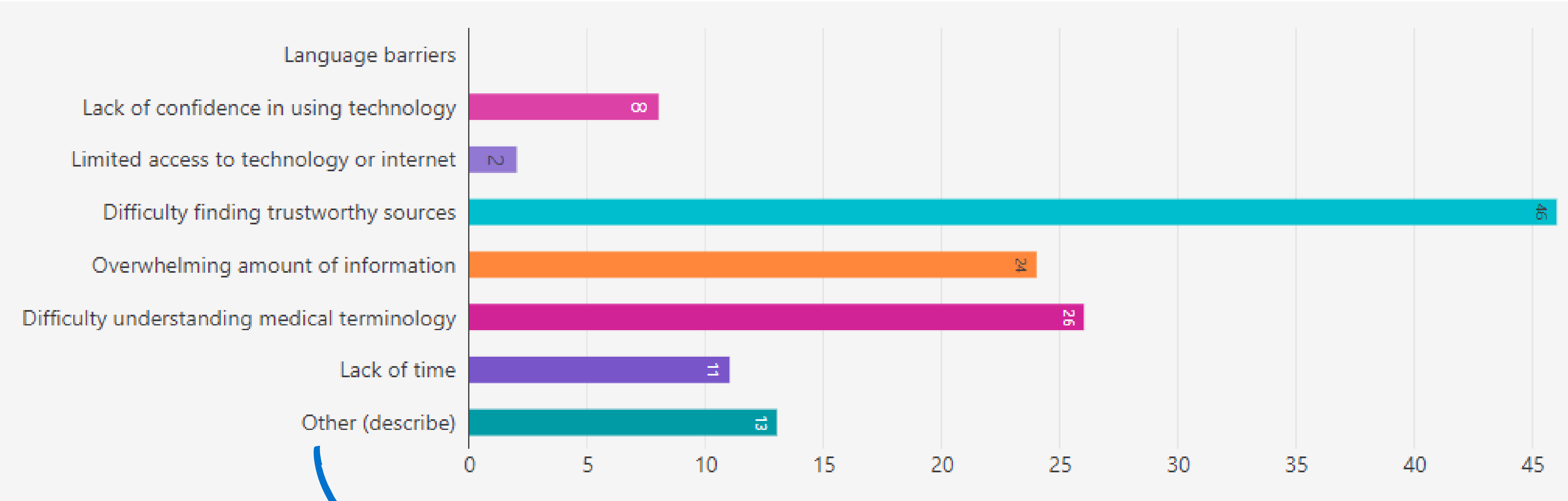
Where do you primarily seek information about your long-term health condition?



Other:

 Internet/google search 

What barriers do you face when trying to access information about your health condition?



Other:

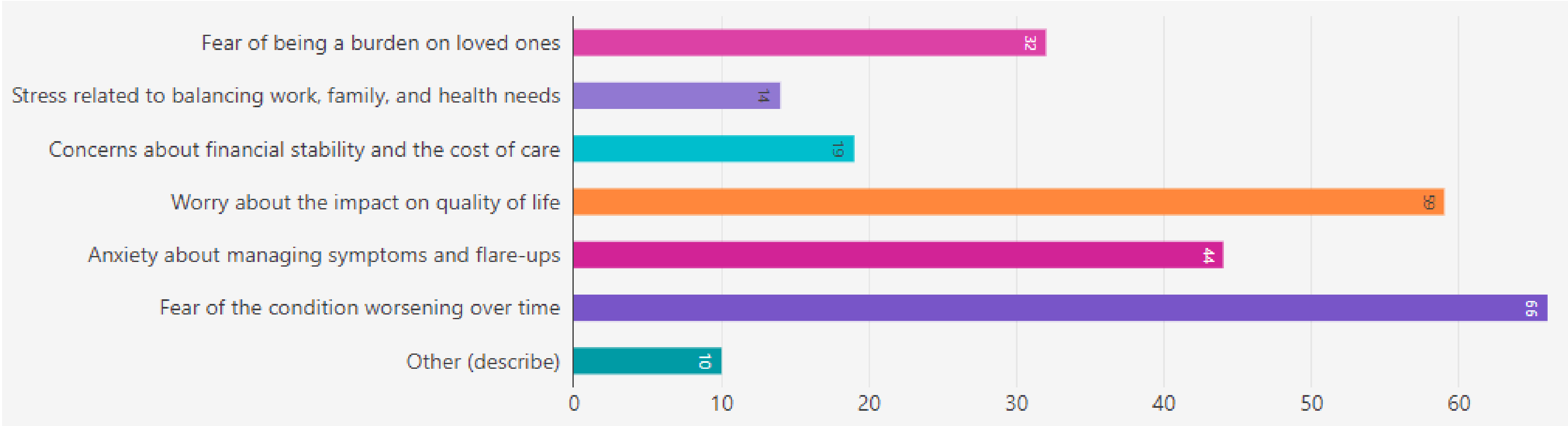
- Lack of information on rarer diseases

- No advice that explains it all

- Difficult to get hold of a GP

- Lack of motivation

What specific anxieties or fears do you experience as a result of living with your long term health condition?



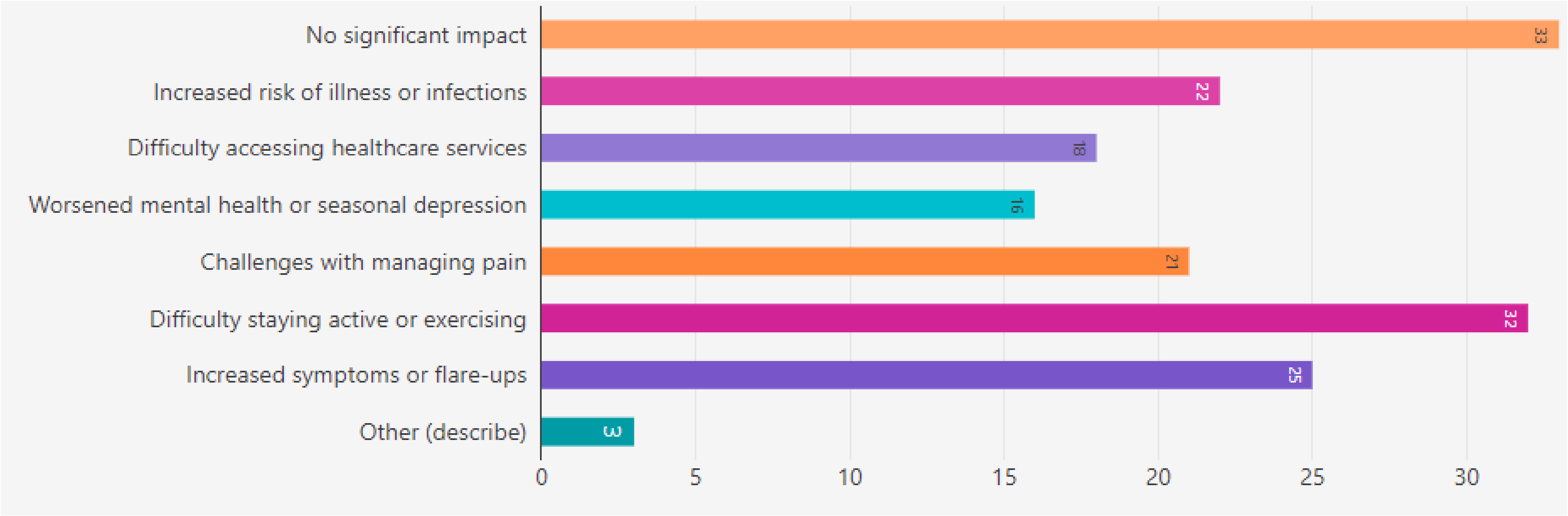
Other:

Pain management

Worry about the need for additional medication and the side effects

A serious event/flare up, how this will impact my life, reduce my independence and my ability to make important decisions about my life

How does the winter season affect your health and daily life with your long term condition?



Online Community Panel

The Frimley Health and Care Online Community Panel is one way of ensuring local people and communities are at the heart of our decision making.



Share your views

- Tell us what you think about local health and care services
- Help us test our assumptions
- Share your ideas for improvements
- Tell us what works and what doesn't



Stay informed

- Keep up to date with local health and care news
- Learn more about local services
- Feel informed to share important news with friends and family



On your terms

- Share your views at a time that suits you
- We'll only contact you via email
- Choose to get further involved if you'd like to
- Unsubscribe at any time

We are actively recruiting to the panel - scan the QR code or visit the website to register. Please share this opportunity with colleagues, friends and family.

<https://secure.membra.co.uk/Join/FrimleyPanel>

SCAN ME

